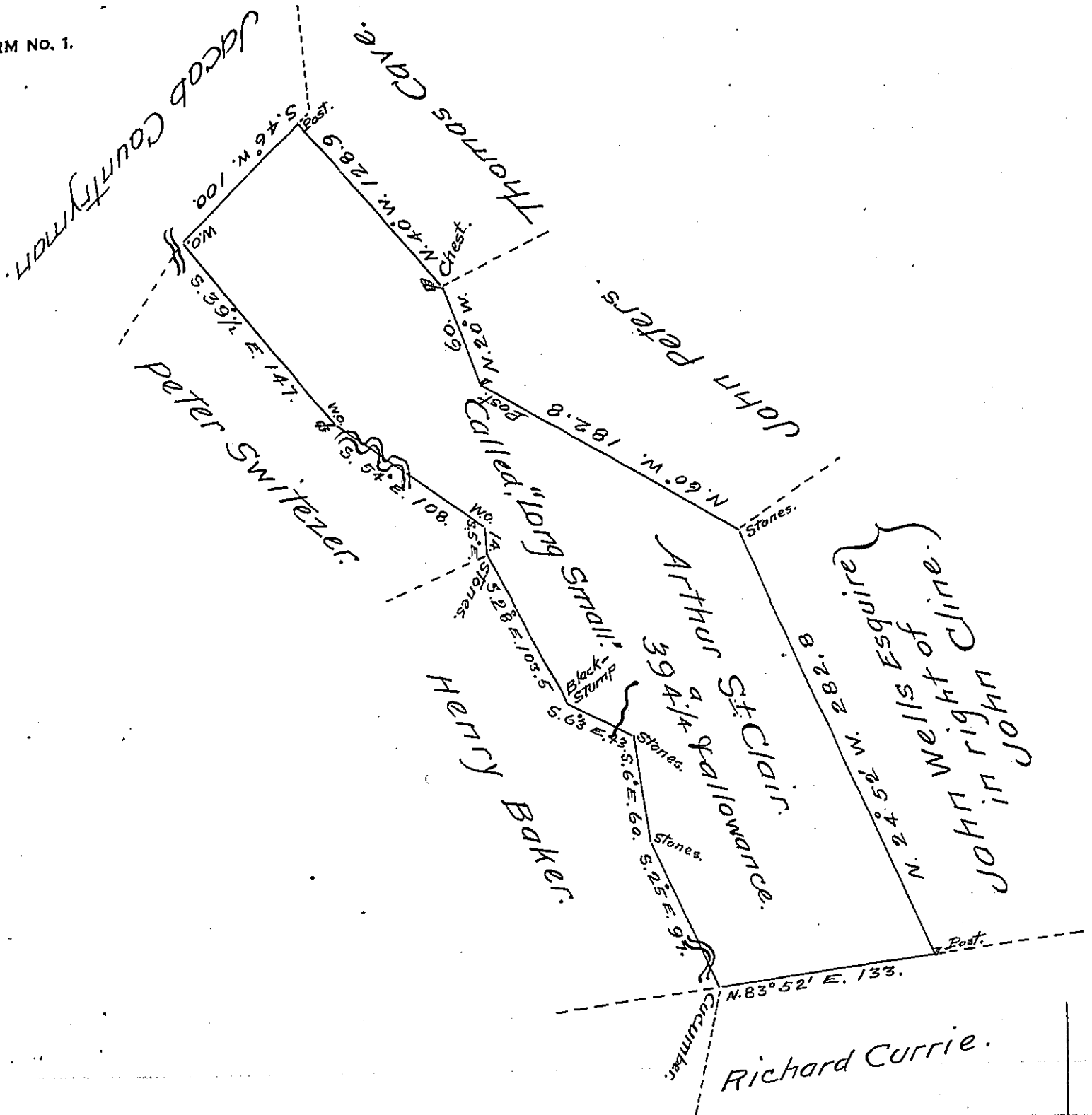


FORM NO. 1.



Situated on the South side of Brush Creek -
 In Londonderry Township Bedford County and
 Surveyed the 3rd day of September 1794 In pursu-
 ance of a warrant Dated the 19th day of July 1793

~~By John Wells (son of Richard)~~

~~Approved by~~

To Daniel Brodhead Esquire }
 Surveyor General }

George Woods Jun^r D.S.

IN TESTIMONY that the above is a copy of the original remaining on file in
 the Department of Internal Affairs of Pennsylvania, made
 conformably to an Act of Assembly approved the 16th day of
 February 1833, I have hereunto set my hand and caused
 the Seal of said Department to be affixed at Harrisburg,
 this Twenty first day of March 1907.

Isaac R. Brown
 Secretary of Internal Affairs.